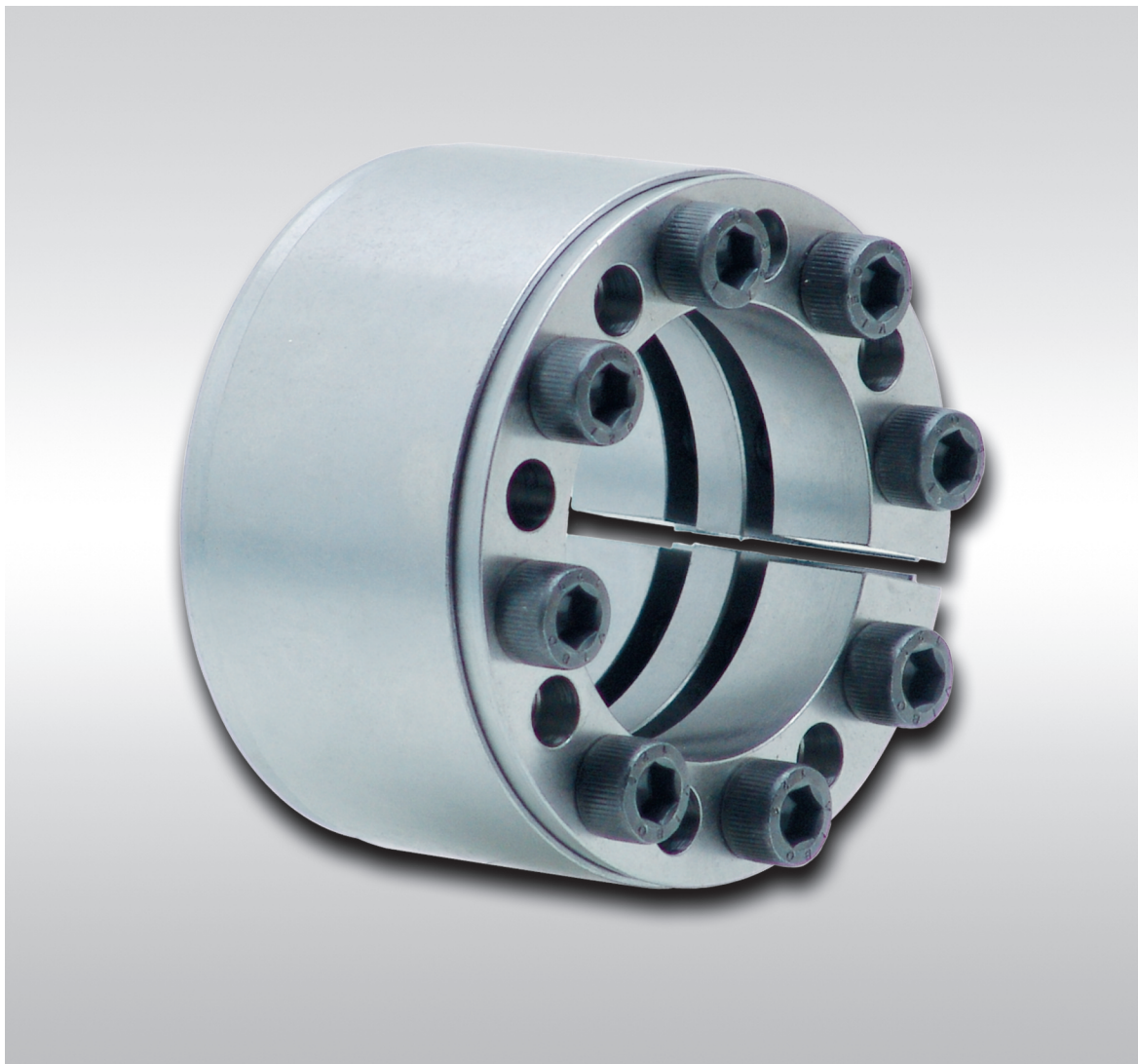


Cone Clamping Elements RLK 404 light

for applications with low contact pressure



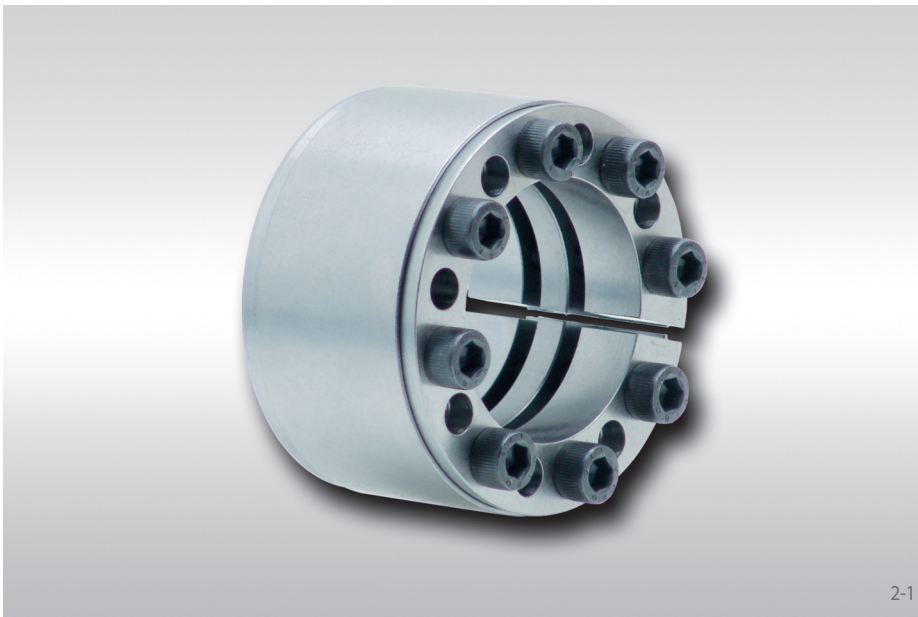
Issue 07/2017 · Technical details subject to change without notice.

E03.029e



Cone Clamping Elements RLK 404 light

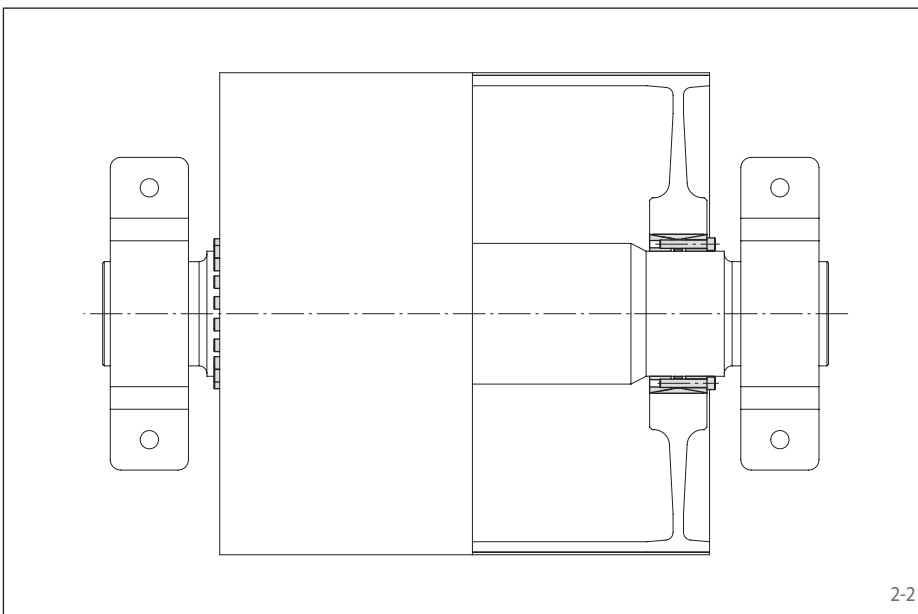
for applications with low contact pressure



2-1

Features

- For applications with low contact pressure
- Centres the hub to the shaft
- No axial displacement between hub and shaft during clamping procedure
- Transmissible torque of 4 100 Nm up to 722 000 Nm
- For shaft diameters between 70 mm and 600 mm



2-2

Application example

Backlash free attachment of a belt drum to the drive shaft of a conveyor belt with a Cone Clamping Element RLK 404 light.

The Cone Clamping Element centres the belt drum on the drive shaft. As no axial shift occurs during the clamping process, the axial position of the belt drum in relation to the drive shaft remains unchanged.

Transmissible torques and axial forces

The transmissible torques or axial forces listed on the following page are subject to the following tolerances, surface characteristics and material requirements. Please contact us in the case of deviations.

Tolerances

- h8 for shaft diameter d
- H8 for hub bore D

Surfaces

Average surface roughness at the contact surfaces between the shaft and the hub bore:
 $R_z = 10 \dots 25 \mu\text{m}$.

Materials

The following apply to the shaft and the hub:

- E-module $\geq 170 \text{ kN/mm}^2$

Installation

Please request our installation and operating instructions for Cone Clamping Elements RLK 404 light.

Simultaneous transmission of torque and axial force

The transmissible torques M which are shown in the tables apply for axial forces $F = 0 \text{ kN}$ and conversely, the indicated axial forces F apply to torques $M = 0 \text{ Nm}$. If torque and axial force are to be transmitted simultaneously, the transmissible torque and the transmissible axial force are reduced. Please refer to the technical points in catalogue „Shaft-Hub-Connections“.

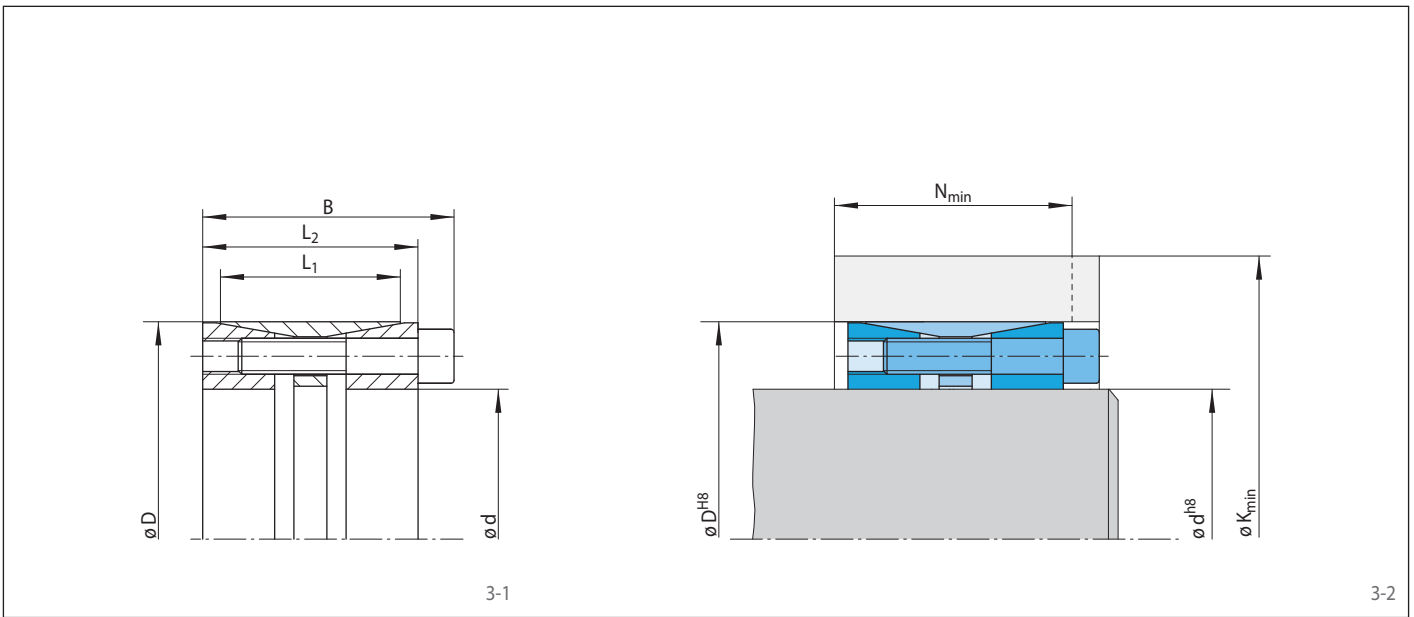
Example for ordering

Cone Clamping Element RLK 404 light for shaft diameter $d = 100 \text{ mm}$:

- RLK 404 light, size 100 x 145
Article number 4205-100402-000000

Cone Clamping Elements RLK 404 light

for applications with low contact pressure



Dimensions												Technical Data										Article number
Size		Yield strength R_e of the hub material [N/mm ²]										Transmissible torque or axial force		Contact pressure at		Clamping screws			Weight			
d mm	D mm	B mm	L ₁ mm	L ₂ mm	200		320		500		M Nm	F kN	Shaft N/mm ²	Hub N/mm ²	Tightening torque M _S Nm	Number	Size	Length mm		kg		
70	110	72	50	62	171	55	146	48	132	45	4100	120	113	72	48	8	M 10	50	2,4	4205-070402-000000		
75	115	72	50	62	175	54	150	48	137	45	4400	120	106	69	48	8	M 10	50	2,4	4205-075402-000000		
80	120	72	50	62	196	58	164	50	147	46	5800	150	124	83	48	10	M 10	50	2,6	4205-080402-000000		
85	125	72	50	62	200	58	169	50	152	46	6200	150	117	80	48	10	M 10	50	2,7	4205-085402-000000		
90	130	72	50	62	212	60	178	51	160	47	7200	160	121	84	48	11	M 10	50	2,8	4205-090402-000000		
95	135	72	50	62	215	59	182	51	164	47	7600	160	115	81	48	11	M 10	50	3,2	4205-095402-000000		
100	145	84	60	72	240	69	200	59	179	54	10700	210	127	88	84	10	M 12	60	4,0	4205-100402-000000		
110	155	84	60	72	247	68	209	59	189	54	11800	210	116	82	84	10	M 12	60	4,5	4205-110402-000000		
120	165	84	60	72	264	70	224	60	202	55	14000	240	117	85	84	11	M 12	60	4,7	4205-120402-000000		
130	180	94	65	82	293	80	247	68	221	62	19500	300	121	87	84	14	M 12	70	6,5	4205-130402-000000		
140	190	94	65	82	309	81	260	69	234	62	22500	320	120	89	84	15	M 12	70	6,6	4205-140402-000000		
150	200	94	65	82	315	80	269	69	243	62	24000	320	112	84	84	15	M 12	70	8,0	4205-150402-000000		
160	210	94	65	82	331	82	283	70	256	63	27500	340	112	86	84	16	M 12	70	7,5	4205-160402-000000		
170	225	107	78	93	366	94	309	79	278	72	37500	440	119	90	133	15	M 14	80	10,9	4205-170402-000000		
180	235	107	78	93	373	93	318	79	287	71	39500	440	112	86	133	15	M 14	80	11,5	4205-180402-000000		
190	250	119	88	105	375	102	325	89	297	82	44500	470	94	72	133	16	M 14	80	14,5	4205-190402-000000		
200	260	119	88	105	400	105	344	91	312	83	53000	530	101	77	133	18	M 14	80	15,0	4205-200402-000000		
220	285	127	96	111	431	113	372	98	340	90	66000	600	96	74	206	15	M 16	90	20,8	4205-220402-000000		
240	305	127	96	111	499	125	421	105	378	95	96000	800	117	92	206	20	M 16	90	22,3	4205-240402-000000		
260	325	127	96	111	523	126	445	106	400	95	109500	840	113	91	206	21	M 16	90	22,9	4205-260402-000000		
280	355	131	96	111	586	128	497	106	445	93	135500	970	131	104	415	15	M 20	90	31,0	4205-280402-000000		
300	375	131	96	111	615	130	523	107	470	94	155000	1050	131	105	415	16	M 20	90	31,3	4205-300402-000000		
320	405	156	124	136	646	157	550	133	496	119	206500	1300	112	88	415	20	M 20	110	48,5	4205-320402-000000		
340	425	156	124	136	660	155	568	132	515	119	219500	1300	105	84	415	20	M 20	110	51,2	4205-340402-000000		
360	455	177	140	155	721	175	616	149	556	134	289000	1600	110	87	567	20	M 22	130	68,4	4205-360402-000000		
380	475	177	140	155	736	174	633	148	575	133	305000	1600	104	83	567	20	M 22	130	73,5	4205-380402-000000		
400	495	177	140	155	778	179	667	151	604	136	353000	1750	109	88	567	22	M 22	130	75,8	4205-400402-000000		
420	515	177	140	155	819	184	701	155	633	138	404500	1950	113	92	567	24	M 22	130	80,0	4205-420402-000000		
440	535	177	140	155	834	183	719	154	652	138	423500	1950	108	89	567	24	M 22	130	84,0	4205-440402-000000		
460	555	177	140	155	849	182	737	154	671	137	443000	1950	103	86	567	24	M 22	130	86,0	4205-460402-000000		
480	575	177	140	155	876	184	762	155	695	138	481500	2000	103	86	567	25	M 22	130	87,0	4205-480402-000000		
500	595	177	140	155	892	183	780	155	715	138	501500	2000	99	83	567	25	M 22	130	90,0	4205-500402-000000		
520	615	177	140	155	943	190	820	160	748	142	584000	2250	107	90	567	28	M 22	130	96,0	4205-520402-000000		
540	635	177	140	155	959	189	838	159	767	141	606500	2250	103	87	567	28	M 22	130	100	4205-540402-000000		
560	655	182	140	160	1001	193	873	161	797	142	674000	2400	108	92	567	30	M 22	130	102	4205-560402-000000		
580	675	182	140	160	1016	192	891	160	816	142	698000	2400	104	90	567	30	M 22	130	105	4205-580402-000000		
600	695	182	140	160	1032	191	909	160	835	141	722000	2400	101	87	567	30	M 22	130	110	4205-600402-000000		

Germany

RINGSPANN GmbH

Schaberweg 30 - 38, 61348 Bad Homburg, Germany
+49 61 72 2750
info@ringspann.de • www.ringspann.de

RINGSPANN RCS GmbH

Hans-Mess-Straße 7, 61440 Oberursel, Germany
+49 61 72 67 68 50
info@ringspann-rcs.de • www.ringspann-rcs.de

France

SIAM - RINGSPANN S.A.

23 rue Saint-Simon, 69009 Lyon, France
+33 4 78 83 59 01
info@siam-ringspann.fr • www.ringspann.fr

Great Britain, Ireland

RINGSPANN (U.K.) LTD.

3, Napier Road, Bedford MK41 0QS, Great Britain
+44 12 34 34 25 11
info@ringspann.co.uk • www.ringspann.co.uk

Italy

RINGSPANN Italia S.r.l.

V.le A. De Gasperi, 31, 20020 Lainate (MI), Italy
+39 02 93 57 12 97
info@ringspann.it • www.ringspann.it

Netherlands, Belgium, Luxembourg

RINGSPANN Benelux B.V.

Nieuwenkampsmaten 6-15, 7472 De Goor,
Netherlands • +31 547 26 13 55
info@ringspann.nl • www.ringspann.nl

Austria, Hungary, Slovenia

RINGSPANN Austria GmbH

Kleegasse 9, 2624 Breitenau, Austria
+43 26 35 62446
info@ringspann.at • www.ringspann.at

Poland

Radius-Radpol Wiecheć Sp.J.

ul. Kolejowa 16 b, 60-185 Skórzewo, Poland
+48 61 814 39 28 • info@radius-radpol.com.pl
www.radius-radpol.com.pl

Romania, Bulgaria

S.C. Divers Util Service S.R.L.

Str. Fratii Golesti, B1 S8, Sc B, Parter, Pitesti,
Judetul Arges, Romania • +4 248 22 22 37
info@rulmentipitesti.ro • www.rulmentipitesti.ro

Sweden, Finland, Denmark, Norway,

Baltic states

RINGSPANN Nordic AB

Industrigatan 7, 61933 Trosa, Sweden
+46 156 190 98
info@ringspann.se • www.ringspann.se

Switzerland

RINGSPANN AG

Sumpfstrasse 7, 6300 Zug, Switzerland
+41 41 748 09 00
info@ringspann.ch • www.ringspann.ch

Spain, Portugal

RINGSPANN IBERICA S.A.

C/Uzbina, 24-Nave E1, 01015 Vitoria, Spain
+34 945 22 77-50
info@ringspann.es • www.ringspann.es

Czech Republic, Slovakia

Ing. Petr Schejbal

Mezivříš 1444/27, 14700 Prag, Czech Republic
+420 222 96 90 22
Petr.Schejbal@ringspann.cz • www.ringspann.com

Asia

Australia, New Zealand

Kempower Pty. Ltd.

6 Phoenix Court, Braeside 3195, Victoria, Australia
+61 3 95 87 90 33 • sales@imtec-kempower.com.au
www.imtec-kempower.com.au

China, Taiwan

RINGSPANN Power Transmission (Tianjin) Co., Ltd.

No. 21 Gaoyan Rd., Binhai Science and Technology
Park, Binhai Hi-Tech Industrial, Development Area,
Tianjin, 300458, P.R. China • +86 22 59 80 31 60
info.cn@ringspann.cn • www.ringspann.cn

India, Bangladesh, Nepal

RINGSPANN Power Transmission India Pvt. Ltd.

GAT No: 679/2/1, Village Kuruli, Taluka Khed,
Chakan-Alandi Road, Pune - 410501, India
+91 21 35 67 75 00 • info@ringspann-india.com
www.ringspann-india.com

Kazakhstan, Central Asia

Industrial Drive LLP

193, Furmanov Street, 050013 Almaty, Kazakhstan
+7 727 350 58 68
info@promprivod.kz • www.promprivod.kz

Singapore, ASEAN

RINGSPANN Office

Arthur Low, 1 Scotts Road, #21-10 Shaw Centre,
Singapore 228208 • +65 96 33 66 92
Arthur.Low@ringspann.com • www.ringspann.com

America

Brazil

Antares Acoplamentos Ltda.

Rua Evaristo de Antoni, 1222, Caxias do Sul, RS,
CEP 95041-000, Brazil • +55 54 32 18 68 00
vendas@antaresacoplamentos.com.br
www.antaresacoplamentos.com.br

USA, Canada, Mexico, Chile, Peru

RINGSPANN Corporation

10550 Anderson Place, Franklin Park, IL 60131, U.S.A
+1 847 678 35 81
info@ringspanncorp.com • www.ringspanncorp.com

Africa and Middle East

Egypt

Shofree Trading Co.

218 Emtedad Ramsis 2, 2775 Nasr City, Cairo, Egypt
+20 2 20 81 20 57
info@shofree.com • www.ringspann.com

Iran

Persia Robot Machine Co. Ltd.

4th Floor, No 71, Mansour St, Motahari Avenue,
Tehran 15957, Iran • +98 21 88 70 91 58-62
forootan@persiarobot.com • www.ringspann.com

Israel

G.G. Yarom Rolling and Conveying Ltd.

6, Hamaktesh Str., 58810 Holon, Israel
+972 3 557 01 15
noam_a@gg.co.il • www.ringspann.com

Maghreb, West Africa

SIAM - RINGSPANN S.A.

23 rue Saint-Simon, 69009 Lyon, France
+33 4 78 83 59 01
info@siam-ringspann.fr • www.ringspann.fr

South Africa, Sub-Saharan

RINGSPANN Transmission Components (Pty) Ltd.

96 Plane Road Spartan, Kempton Park,
P.O. Box 8111 Edenglen 1613, South Africa
+27 11 394 18 30
info@ringspann.co.za • www.ringspann.co.za